



# Paragon Manager™

**User Guide**  
Release 2.0.3

---

Copyright © 2009 Raritan, Inc.  
PMG-01-v2.0.3-E  
May 2009  
255-30-6100-00

---



This document contains proprietary information that is protected by copyright. All rights reserved. No part of this document may be photocopied, reproduced, or translated into another language without express prior written consent of Raritan, Inc.

© Copyright 2009 Raritan, Inc., Paragon®, Paragon Manager, CommandCenter®, Dominion®, and the Raritan company logo are trademarks or registered trademarks of Raritan, Inc. All rights reserved. Java® is a registered trademark of Sun Microsystems, Inc. Internet Explorer® is a registered trademark of Microsoft Corporation. Netscape® and Netscape Navigator® are registered trademarks of Netscape Communication Corporation. All other trademarks or registered trademarks are the property of their respective holders.

## System Requirements

Your system must meet these minimum requirements in order to run Paragon Manager:

- Memory: 256MB
- CPU: 750 MHz Pentium III processor
- Minimum available disk space: 100 MB



# Contents

Chapter 1: Introduction .....	1
Paragon Manager Overview .....	1
Installing Paragon Manager .....	1
Chapter 2: Operation .....	3
Connection and Login .....	3
Establishing a Connection .....	3
Paragon Manager Window Components .....	5
Toolbar .....	7
Device Panel .....	8
Device View .....	9
Ghosting .....	11
System Setting .....	12
User Panel .....	14
Creating a User .....	14
Deleting a User .....	16
Viewing User Properties .....	16
Saving User Profiles .....	17
Loading a User Profile .....	18
Log Panel .....	19
Editing Event Log Settings .....	19
Power Strip View Panel .....	20
Editing Power Strip Data .....	20
Power Strip Outlet Associations .....	21
Channel Information Editor .....	21
Multi Function View (MFV) Panel .....	23
Setting Up Multiple Video Function .....	24
Adding an Association Group .....	24
Editing an Association Group .....	25
Deleting an Association Group .....	25
Video Redirection (Forced Video) .....	26
Refreshing IBM Blade Channel Status .....	26
Setting Up NV5128 Router Association .....	27
Overview of the Router Menu .....	27
Configure Routers .....	27
Configure Servers .....	29
Configure User Stations .....	31
Exporting Router Configuration .....	33
Importing Router Configuration .....	33
Checking Audio/Video Routing Results .....	33
Saving the Paragon Switch's Database .....	34
Updating Firmware .....	34
Reorganizing the Update List .....	37
Disconnection .....	37
Closing Paragon Manager .....	38
Synchronizing Database .....	38
Paragon Manager Help .....	38
Appendix A: Client Software for Paragon II System Controller... ..	39
Some Differences in the Shared Commands .....	40
Connect (Session Menu) .....	40
Create and Property (Users Menu) .....	41
Exclusive Features in P2SC .....	41
RFT_Update (Setup Menu) .....	41
Base UMT's (Setup Menu) .....	41
About Paragon II System Controller Admin .....	42

# Figures

Figure 1 Session Menu - Connect.....	3
Figure 2 Paragon Manager Login Dialog - Connect.....	3
Figure 3 UMT Profile Dialog.....	4
Figure 4 Update Progress .....	4
Figure 5 Paragon Manager Window .....	5
Figure 6 Paragon Manager Window .....	6
Figure 7 Device Tree by Channel .....	9
Figure 8 Tiered Switch Example (Z-CIM).....	9
Figure 9 Device Tree by Type.....	10
Figure 10 Ghosted Channels Option in the View Menu .....	11
Figure 11 System Settings Dialog.....	12
Figure 12 Add User Dialog.....	14
Figure 13 Change Password Dialog .....	15
Figure 14 User Information Dialog .....	16
Figure 15 Admin User Information Screen.....	17
Figure 16 Select Destination Path Dialog .....	17
Figure 17 Confirm Load User Profile Dialog.....	18
Figure 18 Edit Log Settings Dialog.....	19
Figure 19 Power Strip View Panel .....	20
Figure 20 Outlet Information Dialog .....	20
Figure 21 Channel Information Editor Dialog .....	21
Figure 22 MFV with Channel Data .....	23
Figure 23 MFV with Power Strip View Panel.....	23
Figure 24 Add Multiple Port Association Dialog – Initial Screen.....	24
Figure 25 Add Multiple Port Association Dialog – Edit Data .....	25
Figure 26 Force Video Dialog .....	26
Figure 27 Router Menu .....	27
Figure 28 Configure Routers Dialog.....	28
Figure 29 Router Settings .....	28
Figure 30 Configure Servers Dialog.....	29
Figure 31 Source Association Table .....	30
Figure 32 Configure User Stations Dialog.....	31
Figure 33 Destination Association Table.....	32
Figure 34 Paragon Update Dialog.....	35
Figure 35 Paragon Update – Check All.....	36
Figure 36 Paragon Device and File Version Information Window .....	36
Figure 37 Wrong Firmware Warning Message.....	37
Figure 38 Paragon Update Progress Bar .....	37
Figure 39 Paragon Update Successful Message.....	37
Figure 40 Session Menu - Disconnect .....	38
Figure 41 Setup Menu – Synchronize Database.....	38
Figure 42 P2SC - System Controller Admin Login Dialog.....	40
Figure 43 P2SC – Add User Dialog .....	41
Figure 44 P2SC – Paragon System Configuration Dialog (No Data) .....	42
Figure 45 P2SC – Paragon System Configuration Dialog (with Data) .....	42

# Chapter 1: Introduction

## Paragon Manager Overview

Paragon Manager is Raritan's appliance management and configuration application, offering one coordinated graphical user interface that displays Device, User, Log, and Outlet information for your Paragon system. Paragon Manager allows you to add, modify, and delete Devices, Users, or Groups, and to specify log events to keep an audit trail of events that is updated in real time. In addition, you can also perform video redirection (called Forced Video), refresh IBM Blade server's channel status, or associate channels for setting up concurrent multiple-video-output function (called Multiple Video or Port-Following Switch) in Paragon Manager. Paragon Manager can be downloaded from Raritan's website.

If working with a Paragon II configuration, first read the **Paragon II User Guide** for initial installation and configuration of your Paragon II devices. This document can be downloaded from the **Firmware and Documentation** section of Raritan website at:

<http://www.raritan.com/support/firmware-and-documentation/>.

For users who use Paragon II System Controller, see **Appendix A: Client Software for Paragon II System Controller** for the difference between P2SC Admin client software and Paragon Manager.

## Installing Paragon Manager

Follow the steps below to download Paragon Manager.

1. Use your browser to visit Raritan's **Firmware and Documentation** webpage (<http://www.raritan.com/support/firmware-and-documentation/>).
2. Click **Paragon II** on the left pane to open its list of support documents and files.
3. Locate the **Other Support Files** section on the right pane.
4. Click the latest version of "Paragon Manager Admin Tool" to download Paragon Manager.
5. (Optional) If this is your first time to download the program or firmware from the Raritan website, fill in the *Firmware Request* form, and click **Submit**.
6. When you see the hyperlink on the right pane, click it.
7. Specify the location where you want to save the file, and click **Save**. Wait until the download completes.
8. Extract the file if it is a ZIP file.
9. Double click the *ParagonManager-setup.exe* file to install Paragon Manager. Accept the default settings.

When installation is complete, a shortcut to the application has been added to your **Start** menu





## Chapter 2: Operation

### Connection and Login

Only three types of users have permissions to log in to Paragon Manager:

- Administrators (the “Admin” account)
- Users with administrator privileges
- Users with Forced Video privileges

Administrators and users with administrator privileges can manage or even modify the user or channel data in Paragon Manager, but users with Forced Video privileges do not have permissions to do this. The only thing they can do is to perform the Forced Video function.

### Establishing a Connection

Follow the steps below to establish the connection to any Paragon II switch after Paragon Manager is launched:

1. Choose **Start > Programs > Paragon Manager**. The *Paragon Manager* window appears.
2. Choose **Session > Connect**.

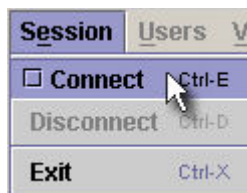


Figure 1 Session Menu - Connect

The *Paragon Manager Login* dialog appears.

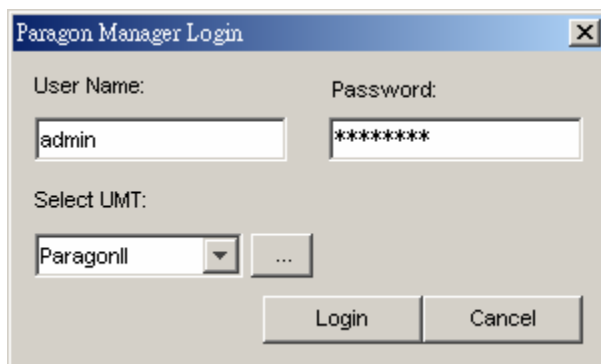



Figure 2 Paragon Manager Login Dialog - Connect

3. Type your user name in the **User Name** field.
4. Type your password in the **Password** field.
5. Decide your next action based on the Paragon switch displayed in the **Select UMT** field:
  - If the desired Paragon switch is already displayed, go to step 6.
  - If the desired Paragon switch is NOT displayed, click the arrow beside the field and select the desired Paragon switch from the drop-down list.
  - If the desired Paragon switch is neither displayed nor available from the drop-down list, do the following to add it:
    - a) Click the  button. The *UMT Profile* dialog appears.

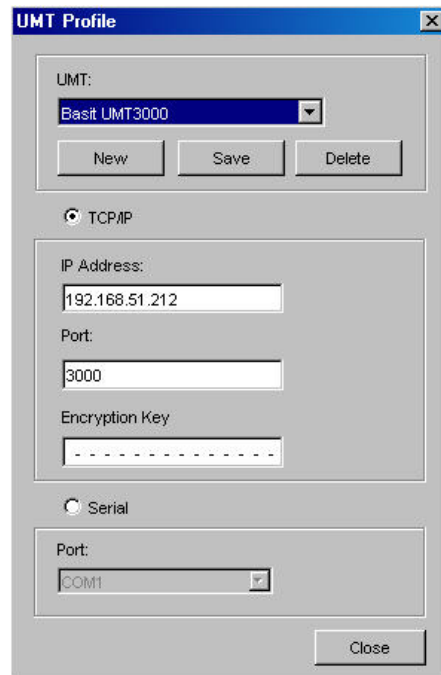


Figure 3 UMT Profile Dialog

- b) Click **New**.
- c) Type the name of the device in the **UMT** field.
- d) Select the **TCP/IP** option.
  - Type the IP address of the Paragon switch in the **IP Address** field.
  - Type the Port number of the Paragon switch in the **Port** field.
  - Type the appropriate encryption key of the Paragon switch in the **Encryption Key** field, if applicable.
- e) Click **Save** to save this new device.
- f) Click **Close** to return to the login window.

---

**Note:** To delete a Paragon switch in the **UMT Profile** dialog:

- (1) Click the drop-down arrow in the **UMT** field and select the device you wish to delete.
  - (2) Click **Delete** to delete it.
  - (3) Click **Close** to return to the login dialog.
- 

6. Click **Login** to log in to the Paragon switch. The *Update Progress* indicator displays your connection status. It may take 30 seconds or longer to connect, depending on your Paragon configuration.

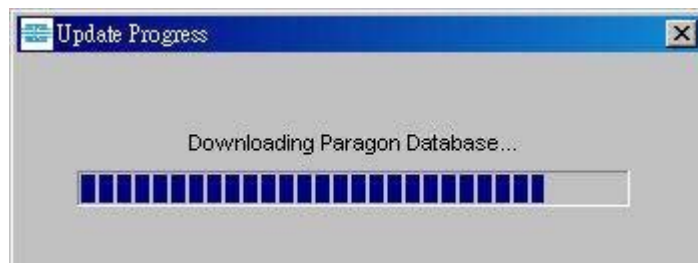


Figure 4 Update Progress

7. When connected, the *Paragon Manager* window appears.

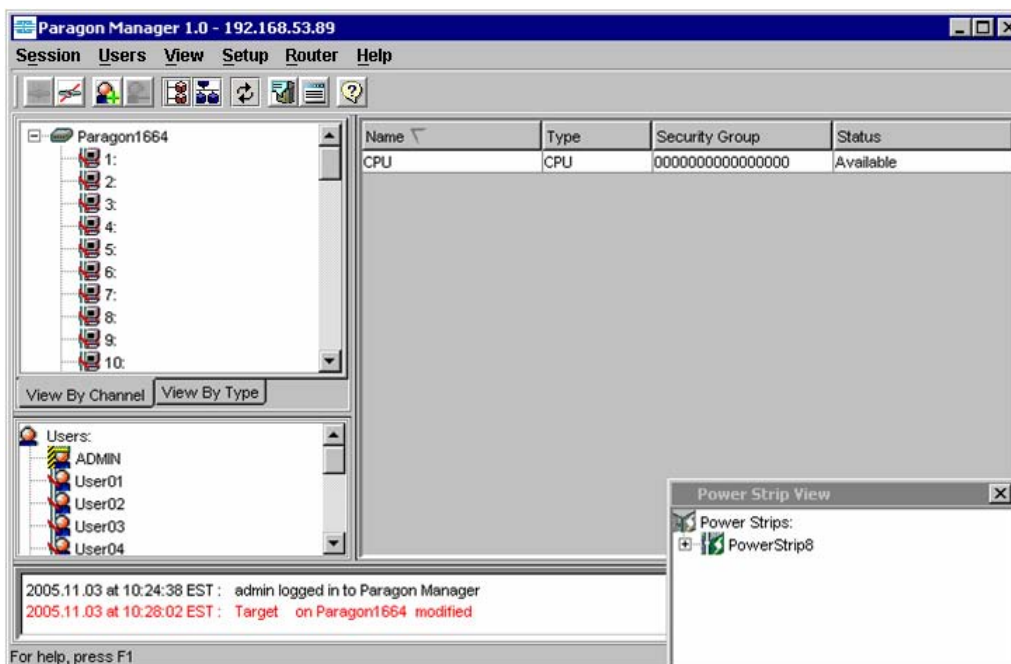


Figure 5 Paragon Manager Window

---

*Note: See **Disconnection** for information on disconnecting the existing connection session, or see **Closing Paragon Manager** for information on closing the application.*

---

## Paragon Manager Window Components

The Paragon Manager window contains the Paragon Manager menu bar and toolbar, the Device panel, User panel, Log panel, and Power Strip View panel.

- The Device panel displays all connected devices in a single Paragon system.
- The User panel displays all users in your Paragon system.
- The Log panel displays the current activity of Paragon Manager.
- The Power Strip View panel displays any power strips connected to your Paragon system.

When you connect to your Paragon switch via Paragon Manager, it downloads the device's database and populates the Device, User, and Power Strip View panels automatically. Initial download may last several minutes, depending on the sizes of the client system and the Paragon system. Once a connection session is initiated, updates to the database happen in real time and changes to the Paragon database from other users are immediately reflected in your Paragon Manager screen.

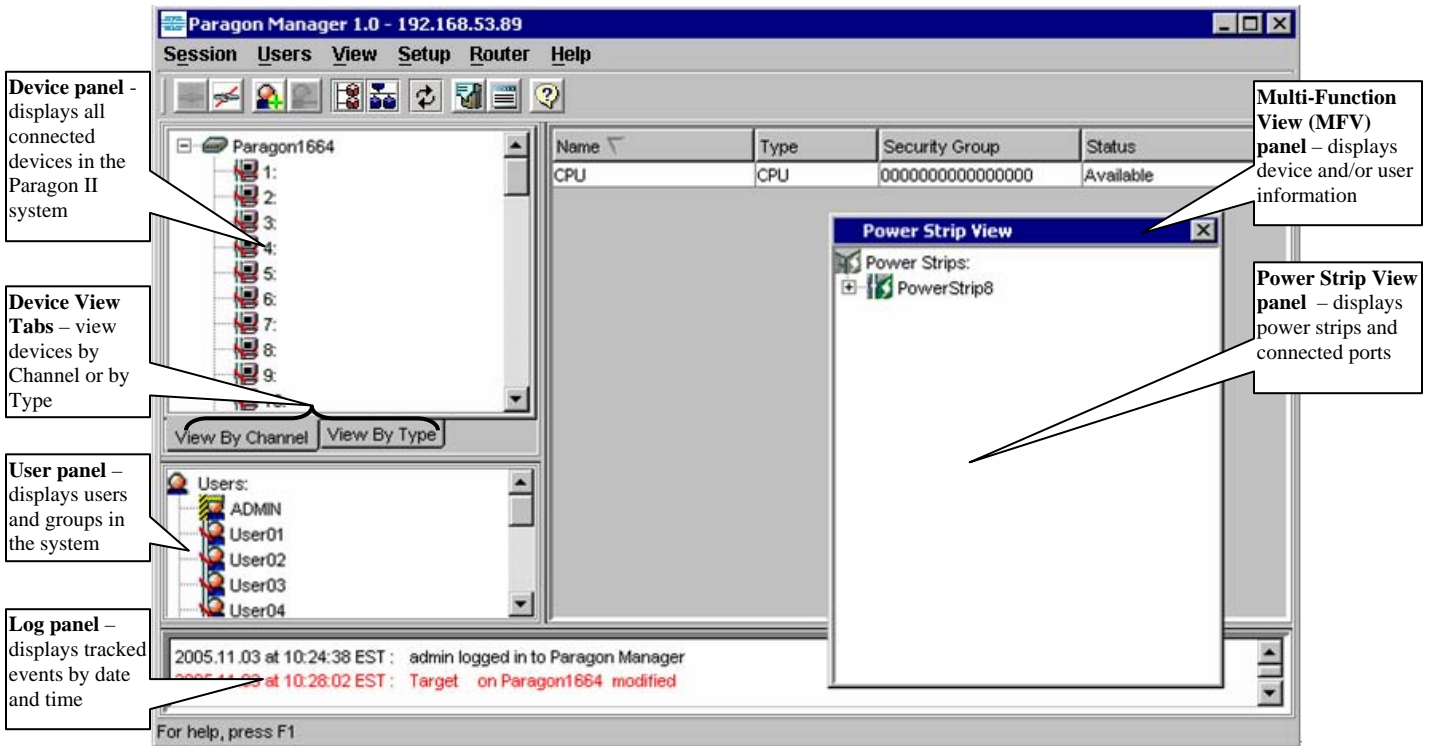


Figure 6 Paragon Manager Window

Customize your view by resizing panels or by displaying or hiding any of these components, except for the Device panel. Select options on the **View** menu; click the desired panels in the menu to display or to hide them. A check mark before the menu item indicates that it is displayed. Only the Device panel cannot be hidden.

Resize the window panels by resting your mouse cursor on the border of two panels until a double-headed arrow appears. Click and drag the arrow to size the panel up/down or left/right.

## Toolbar











---

The toolbar displays shortcut buttons for the most commonly-used commands. These are explained in the table below.

***Note:** Some of these shortcuts, as well as some menu commands, are also available by right-clicking on a User, Device, or Channel icon to activate a shortcut menu.*
















---

### Toolbar Shortcut Icons

BUTTON	ACTION
	<b>Connect:</b> Establishes a connection to the selected Paragon switch.
	<b>Disconnect:</b> Disconnects the existing connection session.
	<b>Add User:</b> Adds a new user account in Paragon Manager and the connected Paragon system.
	<b>Delete Selected User:</b> Deletes the user selected in the User View panel from Paragon Manager and the connected Paragon system.
	<b>View by Channel:</b> Displays devices by Channel.
	<b>View by Type:</b> Displays devices by Type.
	<b>Synchronize Database:</b> Activate the download process again to refresh Paragon Manager's database.
	<b>System Setting:</b> Displays the connected Paragon's system configuration.
	<b>Log File:</b> Launches the <i>Edit Log Setting</i> dialog for Administrators to configure event filters, event severity, and locations of saved log files.
	<b>Help:</b> Launches the Paragon Manager online help.

## Device Panel

The Device panel displays all devices connected to the Paragon switch to which you are connected. To make control easier, view devices either by Channel or by Type using the two tabs at the base of the Device panel (please see next section for additional information on Device views).

ICON	INDICATES:
	Power Strip outlet – power off (server)
	Power Strip outlet – power on (server)
	Power Strip outlet – power off (PWR)
	Power Strip outlet – power on (PWR)
	Channel Available
	Channel Available with one power strip outlet association
	Channel Available with multiple power strip outlet associations
	Channel Disconnected
	Channel Disconnected with one power strip outlet association
	Channel Disconnected with multiple power strip outlet associations
	Channel Occupied by a user
	Channel Occupied by a user, with one power strip outlet association
	Channel Occupied by a user, with multiple power strip outlet associations
	Power Strip Connected
	Power Strip Disconnected

## Device View

### View by Channel

Click the **View By Channel** tab to display devices in a hierarchical tree by channel number. The icon at the top of the tree is the connected Paragon switch.

Click the + symbol next to the Paragon switch to expand the tree and display all devices connected directly to it, listed in port number order. Target servers appear as computer icons.

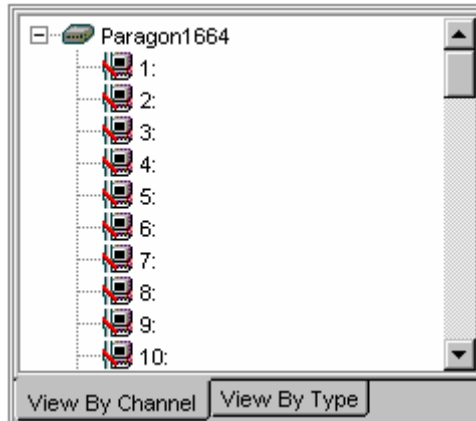


Figure 7 Device Tree by Channel

Tiered switches (such as Z-CIM) appear as icons with the + symbol before them, and can also be expanded.



Figure 8 Tiered Switch Example (Z-CIM)

Grey computer icons represent a target server that is available for connection, while blue computer icons indicate that a user is accessing the target server. Red computer icons represent a target server that is unavailable. See the **Device Panel** table on the previous page for more information.

## View by Type

Click the **View By Type** tab to display devices in a hierarchical tree by device type. Target Systems, Switches, and Power Strips are represented in this view.

- Switches are represented by a grey node.
- Target Systems are represented by a grey computer
- Power Strips are represented by a grey lightning bolt.

Click the + symbol before any icon to expand the tree to display all devices of that type in the configuration, displayed by type in alphabetical order.

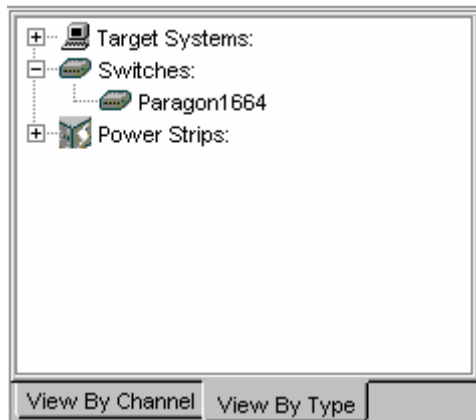


Figure 9 Device Tree by Type



## Ghosting

In a Paragon system, when a CIM or tier device is removed from the system or powered off (manually or accidentally), a record of the CIM or CIMs connected to that tier device is reserved in the Paragon system. The target (or port) name will continue to appear in black text on the On-Screen Display (OSUI) of local user stations, and will also appear, with inactive status, in clients such as Raritan MPC (Multi-Platform Client), RRC (Raritan Remote Client), Paragon Manager, P2SC (Paragon II System Controller) Admin, and CC (CommandCenter).

In versions of PCCI 1.2 and later (and with standalone Paragon 4.1 and later), the default Ghosting mode on the Paragon OSUI is set to **Enable**. When an active CIM is removed from one channel and connected to another channel ('hot-swapped'), you will see two identical CIM entries on the OSUI of the Paragon Clients: one in green text (indicating that it is active) and another in black text (indicating that it is inactive). The inactive CIM is known as the 'ghost' CIM. To stop displaying records of the inactive CIMs after they are hot-swapped into a different port, you must set the Ghosting mode in Paragon to **Disable**.

Even if Ghosting mode in your Paragon device is set to **Disable**, Paragon Manager allows the capability to override the ghost setting on the local machine. Choose **View > Ghosted Channels** to display any ghosted channels even though they are invisible throughout the rest of the Paragon system. This feature allows you to override the Ghosting preferences without changing settings of the entire system. It should be used for administration and for troubleshooting. Please see the next section for specifying Ghosting preferences for the system.



Figure 10 Ghosted Channels Option in the View Menu

## System Setting

Users of Paragon Manager for standalone Paragon product must set up their Paragon system configuration. Use the **System Setting** shortcut on the toolbar, or click **System Setting** on the **Setup** menu.

1. Choose **Setup > System Setting**. The *System Setting* dialog appears.

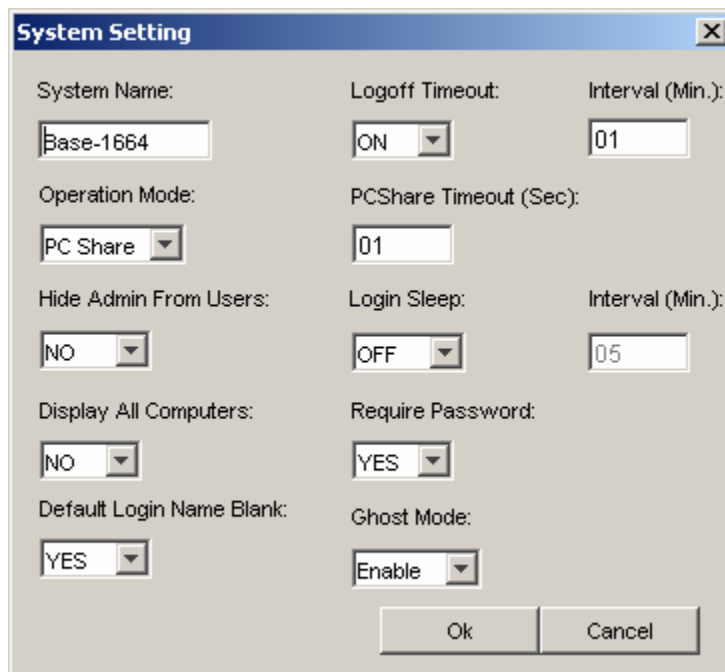


Figure 11 System Settings Dialog







2. Type a name for your Paragon II switch in the **System Name** field (up to 12 alphanumeric characters). It is important for Paragon switches to have distinctive names if they are part of a cascaded system with multiple Base Units.
3. Click the **Operation Mode** drop-down menu and select a mode. Operation Mode indicates the way your Paragon system handles requests from multiple users for access to the same channel port. Choose:
  - **Private:** A server or other device on a specific channel port can be accessed exclusively by only one user at a time. No other users can control that device until its controlling user selects a different channel port.
  - **Public View (P-View):** While one user is accessing a server or other device on a specific channel port, other users can select the same channel port and view the video output from that device, but only the first user will have keyboard and mouse control. When the first user selects a different channel port, the waiting user who is first to type or move the mouse is given keyboard and mouse control. Status messages showing users' identities appear on video-sharing users' monitors when Public View mode is in effect.
  - **PC Share:** A server or other device on a specific channel port can be selected and accessed by more than one user, but only one user has keyboard and mouse control at any given time. If the PC share timeout is enabled and the user in control is idle (no keyboard or mouse activity) for the duration of the timeout, the waiting user who is first to type or move the mouse is given keyboard and mouse control of the PC.
4. Click the **Hide Admin From Users** drop-down arrow and choose Yes or No. When Operation Mode is set to "**Public View**" (P-View), the user in control of a server is normally notified when other users start and stop viewing the channel port's video. However, when **Hide Admin From Users** is set to "**Yes**," administrators can view other users' video without activating this viewing-notification message. The default setting is **No**.

5. Click the **Login Sleep** drop-down arrow and choose OFF, Saver or Green. If you choose Saver or Green, specify the amount of time in minutes that the local user station can remain inactive at the Login Menu before the monitor enters the power-saving mode (press any of the keys on the keyboard to restore normal video). Using leading zeroes if necessary, type in a two-digit number of minutes from 01 to 99 in the **Interval (Min.)** field which is next to the **Login Sleep** field. The default setting is **05**. The difference between Green and Saver is the Saver option makes the monitor go blank with a floater displayed on the screen, but without a floater for the Green option. If the **Login Sleep** is set to “**Off**,” the number in this field will have no effect.
6. Click the **Default Login Name Blank** drop-down arrow and choose Yes or No. This determines whether the **User Name** field in the Login Menu will be blank when the menu appears, or if the field will contain the default user name (the first available “**userxy**” name, where “xy” is a two-digit number with leading zeroes—“user01,” “user02,” and so on). Use the **↑** and **↓** keys to toggle between “**Yes**” (the field is blank – the default value) and “**No**” (field contains the user name).
7. Click the **Logoff Timeout** drop-down arrow and choose On or Off. If enabled, the amount of time in minutes that the local user station can remain inactive before the logged-in user at that station is logged out of the Paragon II system.
  - If **Logoff Timeout** field, above, is set to “**On**,” the number in the **Interval (Min.)** field (the one near the **Logoff Timeout** field) is the number of minutes of inactivity before the timeout is triggered and the user is logged out. Using leading zeroes if necessary, type in a two-digit number of minutes from 01 to 99. The default setting is **05**. If Logoff Timeout is set to “**Off**,” the number in this field will have no effect.
8. Type the timeout (in seconds) in the **PCShare Timeout (Sec)** field. If Operation Mode is set to “**PC Share**” and more than one user has selected a server, the first user to type or use his/her mouse will have control of the server. However, another user can gain control of the server if the first user’s keyboard and mouse remain idle for the length of this timeout. Using leading zeroes if necessary, type in a two-digit number of seconds from 01 to 99. The default setting is **01**.
9. Click the **Require Password** drop-down arrow and choose Yes or No. Determine whether a user can specify a blank password, that is, delete any existing password and have no password at all. Use the **↑** and **↓** keys to toggle between “**No**” (users may delete their existing passwords) and “**Yes**” (the default setting; starting with the first time they change their password, users must always have a non-blank password). Newly created users always start with no password, and must assign one to themselves during initial setup.
10. Click the **Ghost Mode** drop-down arrow and choose Enable or Disable. If you enable ghosting, you will be able to view hot-plugged CIM connections, former and current. If you disable ghosting, you will see only current CIM connections. The default setting is **Enable**.
11. When finished, click **Ok** to accept all system settings, or click **Cancel** to close this screen without saving changes.

## User Panel

The User panel displays users stored on the connected Paragon system and displays each user's profile.

Double-click a user to display the *User Information* dialog. As an Administrator, you can change account properties for users selected in this dialog.

ICON	INDICATES:
	Admin logged in and Connected
	Admin logged in and Disconnected
	Admin logged out and Disconnected
	User logged in and Connected
	User logged in and Disconnected
	User logged out and Disconnected

## Creating a User

1. Choose **Users > Create**. The *Add User* dialog appears.

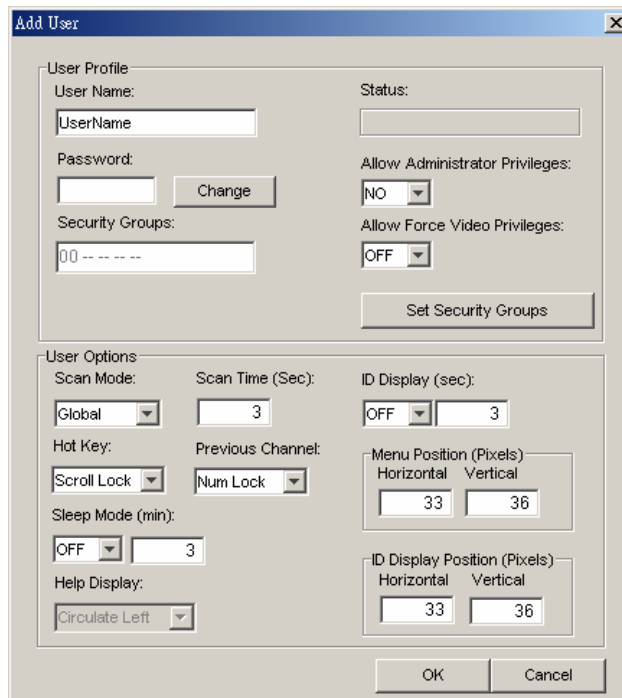


Figure 12 Add User Dialog

2. Type the new user's name in the **User Name** field.

- Click **Change** and the *Change Password* dialog appears. Type a new password in the **Enter New Password** field, and re-type the password in the **Repeat Password** field. Click **OK** when finished.



Figure 13 Change Password Dialog

- The **Security Groups** field is automatically populated, based on the defaults of the Paragon switch to which you are connected. To change the assigned Security Groups, click **Set Security Group** and change the default groups (please consult your Paragon User Guide for more information on Security Groups).
- Click the **Allow Administrator Privileges** drop-down arrow and select an option from the list.
- In the User Options panel, click the **Scan Mode** drop-down arrow and select the scan mode for this user. Global scan mode, the default, scans each channel for the same amount of time (default time = three seconds), and Individual scan mode scans each channel for a specific time the Administrator has specified on the OSUI. To change the number of seconds for the Global scan, type the new duration of seconds in the **Scan Time (Sec)** field.
- Click the **Hot Key** drop-down arrow and select a key from the list. When you press this key twice rapidly on any user station in your Paragon configuration, the Paragon OSUI will appear. Note that this option is set in Paragon Manager, but *used* only at local user stations in the Paragon system.
- Click the **Previous Channel** drop-down arrow and select a key from the list. When you press this key on any user station in your Paragon configuration, the channel previously viewed will re-appear. Choose **None** to override this capability. Note that this option is set in Paragon Manager, but *used* only at local user stations in the Paragon system.
- Click the **Sleep Mode (min)** drop-down arrow and turn the power-saving mode off or on (that is, Saver or Green). If you select **Saver** or **Green**, type in the number of minutes after which, if there is no keyboard or mouse activity, the user station monitor goes blank with a floater displayed (Saver) or without a floater displayed (Green) on the screen.
- The **Help Display** determines how the Paragon help screen is activated from any user station in your Paragon configuration.
- Click the **ID Display (sec)** drop-down arrow to turn the ID display Off or On. If you select On, the ID Display will remain on the user station monitor for the number of seconds you type into the next field.
- In the **Menu Position** and **ID Display Position** panels, enter the **Horizontal** and **Vertical** placement of the menu on any of the user station monitors in your Paragon configuration.
- Allow Force Video Privileges** field: An administrator or user with administrator privileges is by default capable of performing the Forced Video function (video redirection). However, to allow a user without administrator privileges to be able to execute this function, you need to specify the privileges for that user. Please note if you have more than one Paragon switch in your Paragon system, you may need to connect to diverse Paragon switches to configure the Force Video privileges for the same user since each Paragon switch stores their user data respectively. Choose ON to authorize the privileges to the user or OFF to disable the privileges.
- Click **OK** when finished, or click **Cancel** to exit without adding a new user.

## Deleting a User

Deleting a user in the Paragon Manager window deletes the user account from both the Paragon Manager screen and also from the currently connected Paragon system.

1. In the User panel, click the user you want to delete.
2. Choose **Users > Delete**. The *Confirm User Delete* dialog appears.
3. Click **Yes** to delete the user or click **No** to close the dialog without deleting.

---

**Note:** *The Administrator (Admin) cannot be deleted.*

---

## Viewing User Properties

Administrators can modify user properties in Paragon Manager.

1. In the User panel, click the user whose properties you want to modify, or simply double click it.
2. Choose **Users > Property**, or right-click that user and choose **Property** from the pop-up menu. The *User Information* dialog appears.

Figure 14 User Information Dialog

3. Change any of the user's properties, according to the guidelines just outlined in the section **Creating a User**.
4. When finished, click **OK** to change the user properties or click **Cancel** to close the dialog without saving any changes.

Not all of the Administrator User's (Admin) properties can be changed. If you select the Admin icon in the User panel and activate the Admin's *User information* dialog, those properties are grayed out, as illustrated below. Properties that cannot be changed include **User Name**, **Allow Administrator Privileges**, **Allow Force Video Privileges**, **Set Security Groups**, and **Help Display**.

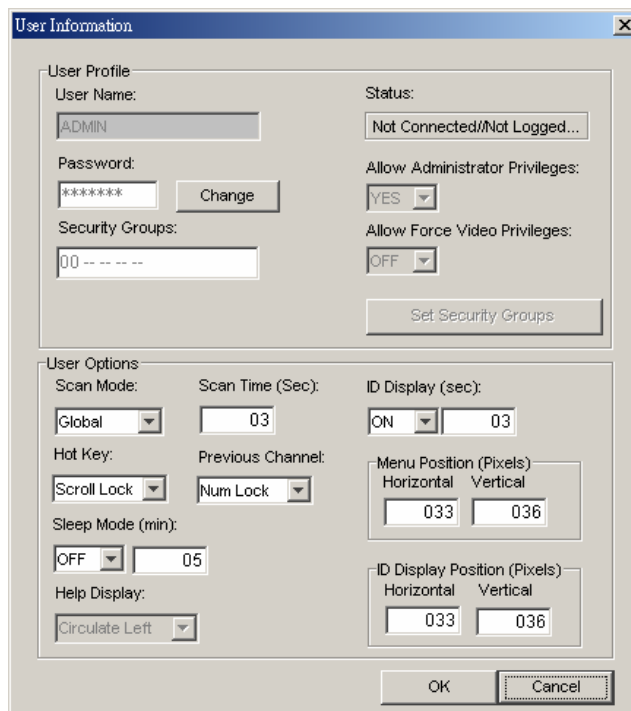


Figure 15 Admin User Information Screen

## Saving User Profiles

As an Administrator, you can back up the User Database of the connected Paragon system to your local computer using the **Save Profile** command.

1. Choose **Users > Save Profile**. The *Select destination path* dialog appears.

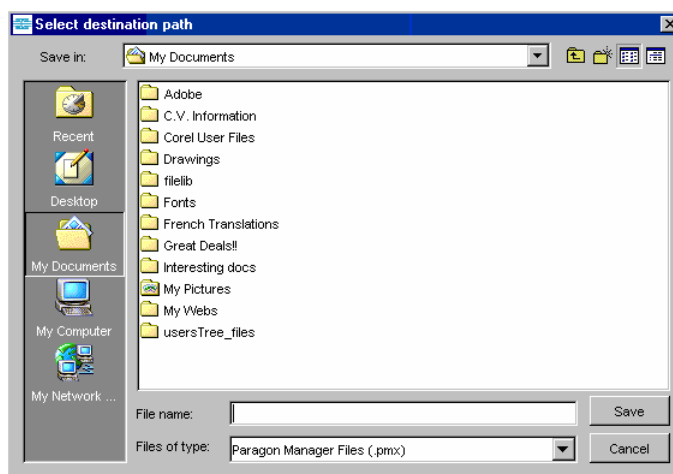


Figure 16 Select Destination Path Dialog

2. Browse through the local system until you find the location where you want to save the Profile. Type the name of the file in the **File Name** field and click **Save**. A confirm message box will display the path to the folder and file you just chose. Click **OK** to close the message box.

---

## Loading a User Profile

---

Use the Load Profiles command to restore previously backed-up Paragon Manager files.

1. Choose **Users > Load Profiles**. The *Confirm Load User Profile* dialog appears.



Figure 17 Confirm Load User Profile Dialog

2. Click **Yes** to load existing user profiles, or click **No** to exit the dialog.

---

**Note:** *If you load a user profile for a user currently in Paragon Manager, the older profile will replace the new profile.*

---

---

Important: The Load Profiles command can be used to restore previously saved Paragon Manager system database files (\*.mxd files) from an older Paragon HW3 configuration.

---



## Log Panel

### Editing Event Log Settings

The Log panel located at the base of the Paragon Manager window displays events that occur in your Paragon system(s). As the Administrator, you can record and configure standard events and message filters, and set severity levels for events, color-coding them for easier identification.

1. Choose **Setup > Log Setting**. The *Edit Log Setting* dialog appears.

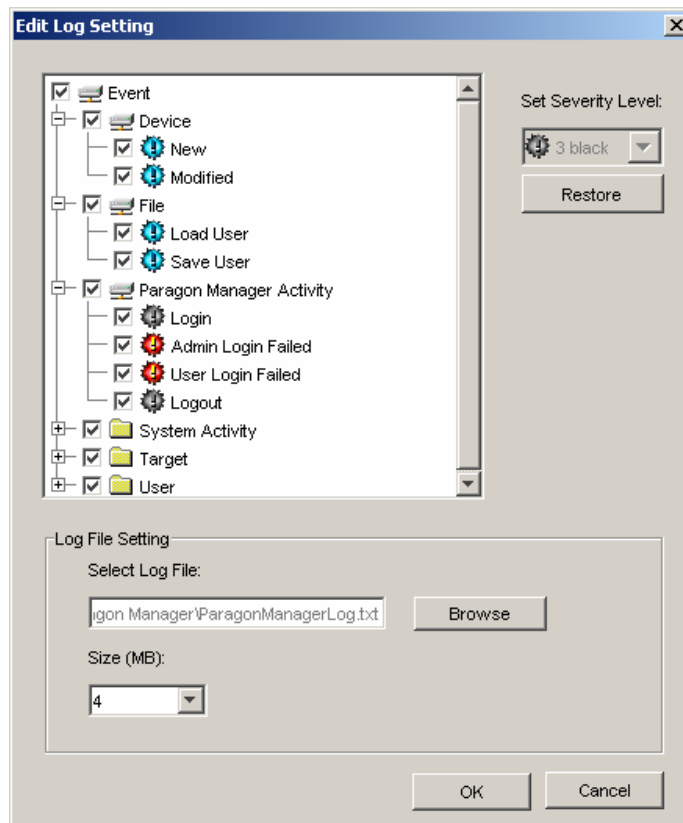


Figure 18 Edit Log Settings Dialog

2. Click the + and – signs to expand and collapse the event tree in this window. Entries in the event tree are pre-determined events programmed into Paragon Manager.
3. Click the checkbox before a device to select and specify events for recording in the log panel. Select an event for the device.
4. On the right side of the window, click the **Set Severity Level** drop-down arrow and select a severity level – levels are color-coordinated: high severity is represented by a red icon, medium severity is blue, and lowest severity is black. To restore the default levels for the events, click **Restore**.
5. In the Log File Setting panel, the location for saved log files appears in the **Select Log File** field. The default location is C:/Documents and Settings (*username*). To change this default location, click **Browse** and locate the folder in which you want to store log files.
6. Click the **Size (MB)** drop-down arrow to select the file size limit (default limit is 4MB). Once the log file hits the size limit set in this field, Paragon Manager automatically creates a new log file and continues to store events.
7. Click **OK** to save the log settings, or click **Cancel** to close the dialog without saving any changes.

## Power Strip View Panel

The Power Strip View panel is a mobile display of Raritan Remote Power Control Strips connected to your Paragon switch. Each node in the Power Strip tree represents a power strip, and you can click the + and – signs to expand and collapse the view of devices plugged into each of the serially-controlled Power Strip outlets. If the Power Strip View panel is not visible, choose **View > Power Strip**.

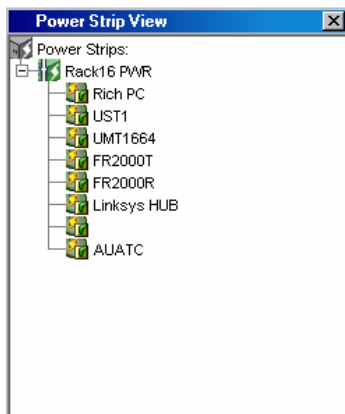


Figure 19 Power Strip View Panel

Paragon Manager automatically detects Raritan Power Strips connected to your Paragon system. Click any Power Strip in the tree to view its outlets. Click the + and – signs to expand and collapse the view. Right-click any Power Strip outlet to view its properties.

## Editing Power Strip Data

To organize the Power Strips in your Paragon configuration and to keep track of the machines to which they are connected, you may want to name the Power Strips and outlets.

1. Double-click any Power Strip icon to view its properties. The *Outlet Information* dialog appears.

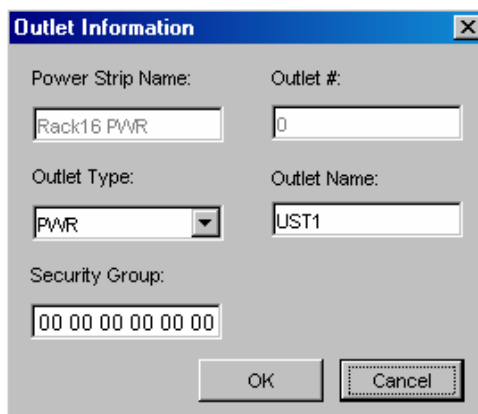


Figure 20 Outlet Information Dialog

2. The default name of the strip appears in the **Power Strip Name** field. Type a new name if needed.
3. The **Outlet #** field is automatically populated and cannot be changed.
4. Click the **Outlet Type** drop-down arrow to select either a Power (PWR) or CPU type outlet.
5. Type the name of the outlet in the **Outlet Name** field.

6. Type the Security Group in the **Security Group** field.
7. Click **OK** to save the changes, or click **Cancel** to close the window without saving any changes.

---

***Note:** Because the Power Strip cannot detect what device type is associated with a specific outlet through the power cables, outlet associations must be created manually before an outlet can indicate to what type of device it supplies power.*

---

## Power Strip Outlet Associations

---

You can assign specific devices to unassigned Power Strip Outlets from the Paragon Manager interface.

1. Expand the Power Strip tree so you can see the outlet to which you plan to assign the selected device.
2. Click a device in the Device panel and drag the Device icon to the desired outlet icon.
3. When you release the device, a confirm message box appears. Click **Yes** to associate Device to this outlet or click **No** to cancel this action. You can now control the Device from the Paragon OSUI.

---

***Note 1:** For devices with redundant power supplies, one device can be associated with up to four outlets.*

***Note 2:** Paragon Manager only allows you to configure the power strip association setting. You cannot use it to control the associated power strip. To control the power strip, you must use the Paragon OSUI. For more information, see **Paragon II User Guide**, which can be downloaded from the **Firmware and Documentation** section of Raritan's website: <http://www.raritan.com/support/firmware-and-documentation/>.*

---

## Channel Information Editor

---

To view the properties or change the name of channel:

1. Select the target channel in the Device View panel.
2. Right click the highlighted channel and select **Property**. The *Channel Information Editor* dialog appears.

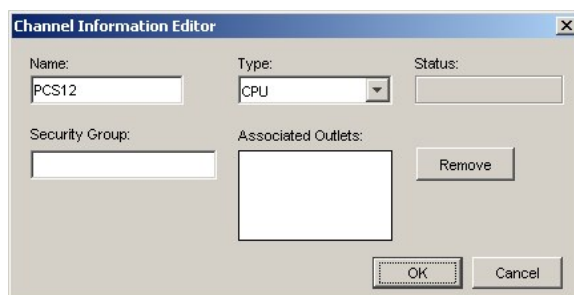


Figure 21 Channel Information Editor Dialog

- **Name:** Give the device on this channel a name.
- **Type:** Select what type of device this is, **CPU** for target servers or any of the Raritan PowerStrips or non-Paragon switches available in the list.  
Depending on the **Type** selected, further information may be available in the dialog.
- **Status:** Displays the current status of a target device on this channel.

- **Security Group:** The security groups the target device belongs to (*This only affects local Paragon access from outside of CommandCenter*).
  - **Associated Outlets:** Lists any power outlets associated with this target device. Select an outlet and click **Remove** to break an association.
  - **Serial Number:** Displays the serial number of a non-CPU type device.
3. Click **OK** to save your changes when done, or **Cancel** to exit without saving.
  4. After saving the channel information, this device can be recognized by the given name in both the System Controller Admin and the CommandCenter Configure Ports screen.

## Multi Function View (MFV) Panel

The Multi Function View (MFV) panel of the screen displays detailed information of items you select in the Device panel, User panel, or Power Strip panel and allows Administrators to edit item properties from this list.

If you select a device in the Device tree, the MFV displays target-related information: name, device type, security group, and device status. If you select a user in the User tree, the MFV displays user-related information: user name, Admin status, security group, scan rate, and connection information. If you select a power strip outlet, the MFV displays outlet name and connected device type.

Administrators can double-click an entry in the MFV to activate the properties dialog for that entry, and modify data for devices, users, or outlets, as described in the respective sections of this chapter.

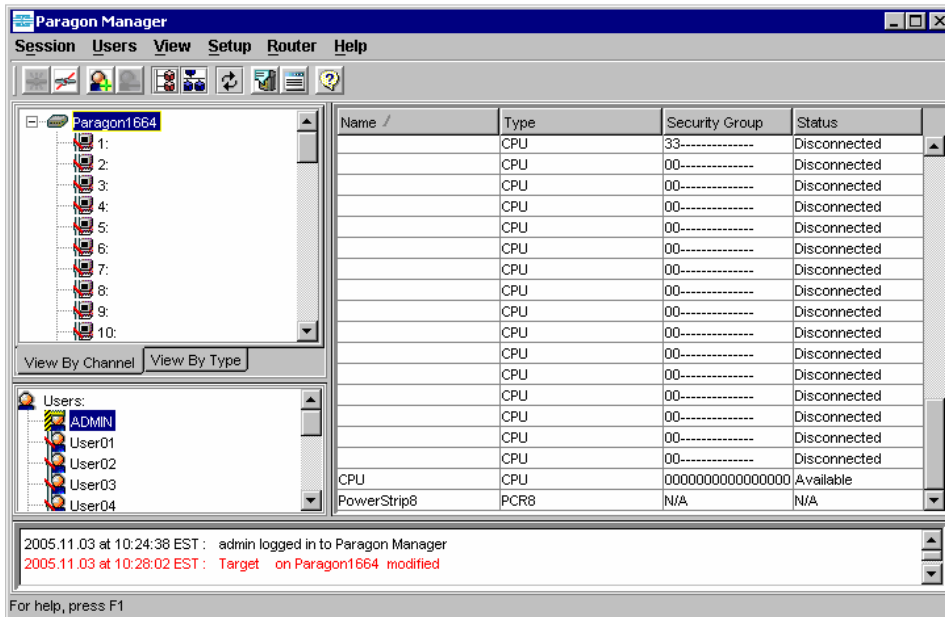


Figure 22 MFV with Channel Data

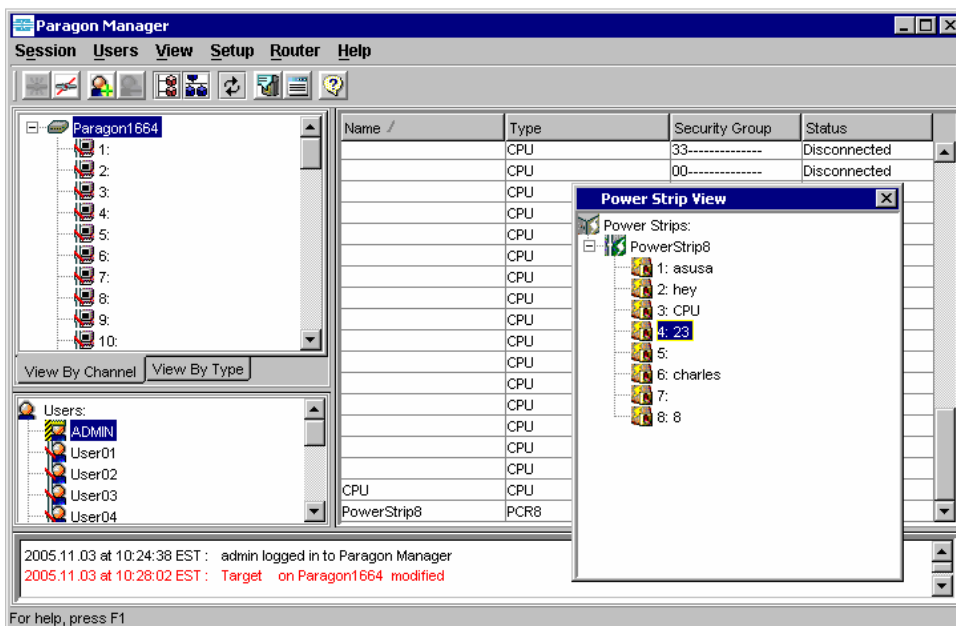


Figure 23 MFV with Power Strip View Panel

## Setting Up Multiple Video Function

Multiple Video allows users to leverage a server's numerous video ports, providing enhanced flexibility in video access and port operations.

Multiple Video, also known as "Port Following Switch," enables multiple user stations (2 or 4) to simultaneously view the video output of a single server that has more than one video port. Multiple Video may also be used to send video from separate servers to sequential user stations. This function is executed through the Paragon OSUI, but must be configured in Paragon Manager first. Always remember that only channels on the same Paragon switch can be associated as one group. Up to 256 association groups can be set per Paragon system.

---

***Note:** Anyone can perform the Multiple Video function on the Paragon OSUI, but only the Administrator or users with administrator privileges can set up the channel association in Paragon Manager.*

---

### Adding an Association Group

In order to perform Multiple Video, you must set up the channel association. One association group consists of 2 or 4 channels, but each channel is associated in one group only.

1. Choose **Setup > Multiple Video**. The *Add Multiple Port Association* dialog appears.

Association Name	UMT Name	First	Second	Third	Fourth	Viewing Mode

Figure 24 Add Multiple Port Association Dialog – Initial Screen

2. Click **New** to start creating an association setting.
3. Type a name in the **Association Name** field to identify this association group. Up to 20 characters can be entered.
4. Click the **UMT** drop-down arrow and select the Paragon switch whose channels you are going to associate. By default, each Paragon switch's name is followed by its serial number.
5. Click the **Viewing Mode** drop-down arrow, and select the desired option, as explained below.
  - **Dual Screens** associates two channels.
  - **Quad Screens** associates four channels.

6. Click the **First Channel** drop-down arrow and select the channel number that will be able to activate video outputs of other channels when it is accessed.
7. Click the **Second Channel** drop-down arrow and select the channel number whose video output will be activated when the first channel is accessed.
8. Repeat step 7 for **Third** and **Fourth Channel** if you choose “Quad Screens” in Step 5.
9. Choose the desired action(s) from the following:
  - Click **OK** to save changes and exit the dialog.
  - Click **Apply** to save changes without exiting the dialog.
  - To exit the dialog without saving any changes, click **Close**.
  - If you want to create more association groups, repeat steps 2 to 9 to complete each association setting.

## Editing an Association Group

You can modify any existing association group to meet your needs instead of creating a new association group from scratch.

1. Choose **Setup > Multiple Video**. The *Add Multiple Port Association* dialog appears.
2. Click the association group that you want to edit from the list on the lower part of the dialog.

Association Name	UMT Name	First	Second	Third	Fourth	Viewing Mode
TV-Wall01	Paragon229	6	24			Dual Screens
TV-Wall02	Paragon229	22	1	32	15	Quad Screens
TV-Wall03	Paragon229	2	3	4	5	Quad Screens
TV-Wall04	Paragon229	21	11	12	18	Quad Screens
TV-Wall05	Paragon229	16	29			Dual Screens
TV-Wall06	Paragon229	31	30	28	27	Quad Screens
TV-Wall07	Paragon229	19	8	23	20	Quad Screens
TV-Wall08	Paragon229	14	10	25	7	Quad Screens

Figure 25 Add Multiple Port Association Dialog – Edit Data

3. (Optional) If you want to change the total number of channels, click the **Viewing Mode** drop-down arrow and select the appropriate option.
4. Change the channel configuration.
5. Click **Apply** to save the changes, or **Close** to exit the dialog without saving any changes.

## Deleting an Association Group

You can remove any unnecessary or obsolete association group from the list.

1. Choose **Setup > Multiple Video**. The *Add Multiple Port Association* dialog appears.

2. Click the association group that you want to delete from the list on the lower part of the dialog.
3. Click **Delete**.
4. Click **Y** to delete the group, or **N** to abort the deletion.

## Video Redirection (Forced Video)

You can direct a channel output its video/keyboard/mouse signals to a specific user station and thus display the video image on that user station's monitor. Please note that the signals can only be directed to a user station connected to the same Paragon switch. By default, only an administrator user can perform the function. To allow a non-administrator user to execute it, see the description of Force Video setting in **Creating a User** for related information.

1. First connect to the Paragon switch on which you want to perform Forced Video. See **Connection and Login** for more information.
2. Perform Forced Video through one of the following methods:
  - Click the channel of the target server in the Channel panel, and then choose **Setup > Force Video**.
  - Right-click the channel of the target server in the Channel panel, and select **Force Video** from the pop-up menu.

The *Force Video* dialog appears.

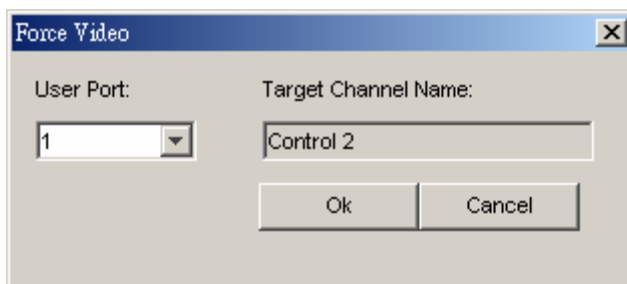


Figure 26 Force Video Dialog

3. Click the **User Port** drop-down arrow and select the user port to which the desired user station is connected.
4. Click **OK**.

## Refreshing IBM Blade Channel Status

The Paragon switch does not automatically detect and reflect the real-time IBM Blade server status. To update the channel status, you can perform the “RefreshBLD-I” command on the OSUI or in Paragon Manager. For information on using OSUI to refresh the IBM Blade channel status, see *Paragon II User Guide*, which can be downloaded from the **Firmware and Documentation** section of Raritan's website: <http://www.raritan.com/support/firmware-and-documentation/>.

1. Verify whether the Device View panel sorts channels by channel numbers. If not, click the **View By Channel** tab.
2. Locate the IBM BladeCenter chassis channel, which is preceded with a plus sign.
3. Right-click the channel and select **Property**. The **Channel Information Editor** dialog appears.
4. Type RefreshBLD-I in the **Name** field. Note the command is case-sensitive.
5. Click **OK** and the Paragon system updates IBM Blade channel status for 2 to 4 minutes.

Paragon Manager does not save “RefreshBLD-I” as a channel name so the IBM BladeCenter chassis channel will restore its original name.



## Setting Up NV5128 Router Association

Paragon version 4.6 or later supports audio/video routing when working with the NVISION® NV5128 multi-format router and Paragon Manager 2.0.3 or later.

To activate this function, the router association data is required. With the router association data, Paragon Manager can command the NV5128 router to direct audio/video signals from specified audio/video sources to specified audio/video destinations when any access to Paragon channels occurs.

---

Important: The audio/video routing function is applicable to a “one-tier” configuration only, which comprises a single Paragon Main Unit or a combination of a Paragon Main Unit and Stacking Unit(s). You can associate the router with a maximum of 16 user ports and 128 channel ports in the Paragon system.

---

### Overview of the Router Menu

---

The **Router** menu provides all commands necessary to deal with the router association.

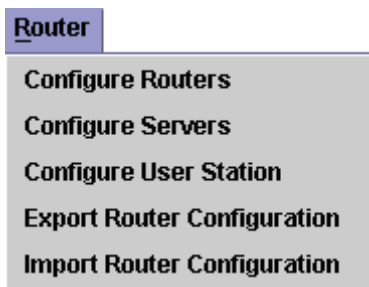


Figure 27 Router Menu

To create the router association data from scratch, three commands are necessary:

- **Configure Routers**
- **Configure Servers**
- **Configure User Stations**

To save new router association data or the changes made to existing data, use this command:

- **Export Router Configuration**

To import any existing router association data into Paragon Manager, use this command:

- **Import Router Configuration**

### Configure Routers

---

Specify one or more NV5128 routers that you want the Paragon switch to associate with in Paragon Manager.

#### Adding NV5128 Routers

1. Choose **Router > Configure Routers**. The *Configure Routers* dialog appears.

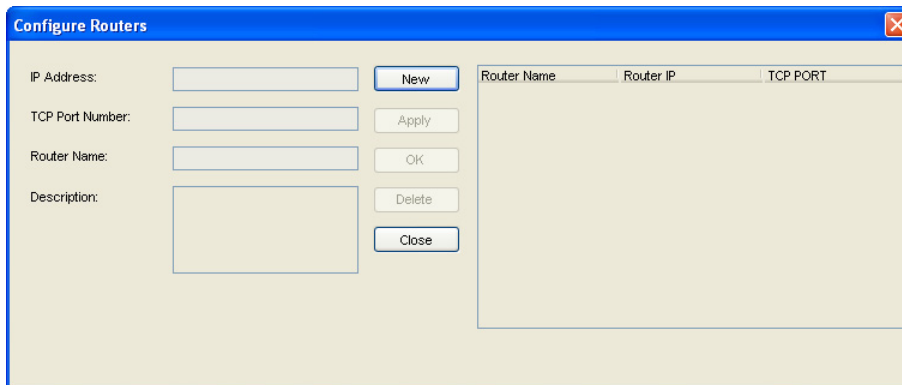


Figure 28 Configure Routers Dialog

2. Click **New** to start adding a router.
3. Type the NV5128 router's IP address in the **IP Address** field.
4. Ensure the **TCP Port Number** field displays 5194.

---

Important: Do *not* change the TCP port number, or Paragon Manager cannot control the NV5128 router.

---

5. Type a name in the **Router Name** field for identifying the router.
6. (Optional) Type any descriptive text in the **Description** field.
7. Do one of these:
  - Click **Apply** to save the changes and the router setting is displayed in the table to the right. Repeat Steps 1 to 7 if you want to add more NV5128 routers.
  - Click **OK** to save the changes and quit the dialog.
  - Click **Close** to quit the dialog without saving the changes.

### Editing NV5128 Router Settings

You can change existing router settings if IP address of any NV5128 router has been changed or is incorrect.

1. Choose **Router > Configure Routers**. The *Configure Routers* dialog appears.
2. Click the row containing the router settings that you want to change in the table. The highlighted router's settings are all displayed in the fields to the left.

Router Name	Router IP	TCP PORT
NV5128 Router	192.168.84.207	5194
NV5128 Second Router	192.168.84.222	5194

Figure 29 Router Settings

3. Change any field you want except for the **Router Name** field.
4. Do one of these:
  - Click **Apply** to save the changes, and then the changes are reflected in the table. Repeat Steps 1 to 4 if you want to edit more NV5128 router settings.
  - Click **OK** to save the changes and quit the dialog.
  - Click **Close** to quit the dialog without saving the changes.

## Removing NV5128 Routers

You can delete any existing NV5128 routers from Paragon Manager so that Paragon Manager can no longer control it. When you delete the router, all association data relevant with the router is removed, either.

1. Choose **Router > Configure Routers**. The *Configure Routers* dialog appears.
2. Click the row containing the router that you want to remove from the table.
3. Click **Delete**.
4. A confirmation message appears. Click **Yes** to remove the router or **No** to abort the removal.
5. Repeat Steps 1 to 4 if you want to remove more routers.
6. Click **Close** to quit the dialog.

## Configure Servers

Channels ports on a Paragon switch usually connect to servers, and source ports (input connectors) on a NV5128 router connect to audio/video output devices. To determine which audio/video output devices the router should output audio/video signals when you access any Paragon channel port, you must associate channel ports with the source ports. A channel port can be associated with a maximum of 8 source ports, and each source port can be associated with one channel port only.

### Adding Source Association Data

1. Choose **Router > Configure Servers**. The **Configure Servers** dialog appears.

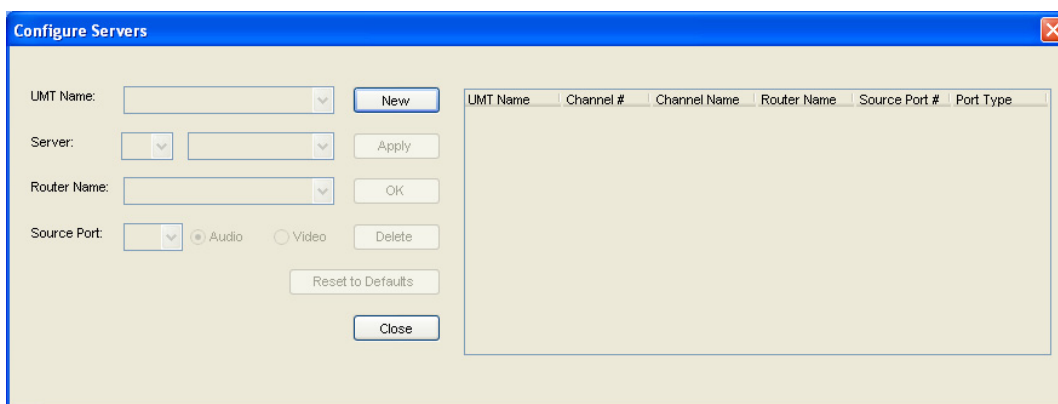


Figure 30 Configure Servers Dialog

2. Click **New** to start adding source association data.
3. Click the **UMT Name** drop-down arrow and select the Paragon Base Unit to which the Paragon Manager is connecting.
4. In the **Server** field, select the channel port on the Paragon switch that you want to associate with the router's source port(s). Click the *left* drop-down arrow to select the channel number and the right drop-down combo box will show the channel name if any.
5. Click the **Router Name** drop-down arrow and select the NV5128 router whose source ports you want to associate with.
6. This step varies depending on your physical hardware configuration:
  - **To associate all ports based on identical port numbers:**
    - a. Click **Reset to Defaults**.
    - b. A confirmation message appears. Click **Yes** to reset. Then each channel port is associated with a source port if they share the same port numbers. Note that the port type of all source association data is set to Audio by default.
  - **To associate the ports at a random sequence:**

- a. Click the **Source Port** drop-down arrow and select the source port to associate with.
  - b. Click **Audio** if the selected source port is an audio connector, or **Video** if it is a video connector. The default is **Audio**.
7. If you associate the ports at a random sequence in Step 6, do one of these:
- Click **Apply** to save the changes and the new association data is displayed in the table to the right. Repeat Steps 1 to 7 if you want to add more source association data.
  - Click **OK** to save the changes and quit the dialog.
  - Click **Close** to abort the changes and quit the dialog.

### Editing Source Association Data

You can change existing source association data when any setting is incorrect or if you have made changes to the physical hardware configuration. For example, you may have moved the audio/video output devices from one source port to another source port or to a different NV5128 router.

1. Choose **Router > Configure Servers**. The **Configure Servers** dialog appears.
2. Click the row containing the source association settings that you want to change in the table. The highlighted data's settings are all displayed in the fields to the left.

UMT Name	Channel #	Channel Name	Router Name	Source Port #	Port Type
Paragon242	1		NV5128 Router	1	Audio-DVI
Paragon242	10		NV5128 Router	10	Audio-DVI
Paragon242	11		NV5128 Router	11	Audio-DVI
Paragon242	12		NV5128 Router	12	Audio-DVI
Paragon242	13		NV5128 Router	13	Audio-DVI
Paragon242	14		NV5128 Router	14	Audio-DVI
Paragon242	15		NV5128 Router	15	Audio-DVI
Paragon242	16		NV5128 Router	16	Audio-DVI
Paragon242	17	APS2-01	NV5128 Router	17	Audio-DVI
Paragon242	18	APS2-02	NV5128 Router	18	Audio-DVI
Paragon242	19	APS2-03	NV5128 Router	19	Audio-DVI
Paragon242	2		NV5128 Router	2	Audio-DVI
Paragon242	20	APS2-04	NV5128 Router	20	Audio-DVI

Figure 31 Source Association Table

3. Change any field you want except for the **UMT Name** and **Server** fields, or click **Reset to Defaults** to reset all source association settings based on identical port numbers.
4. Do one of these:
  - Click **Apply** to save the changes, and then the changes are reflected in the table. Repeat Steps 1 to 3 if you want to edit more source association settings.
  - Click **OK** to save the changes and quit the dialog.
  - Click **Close** to quit the dialog without saving the changes.

### Removing Source Association Data

You can remove any invalid source association settings from the table.

1. Choose **Router > Configure Servers**. The **Configure Servers** dialog appears.
2. Click the row containing the source association settings that you want to remove from the table.
3. Click **Delete**.
4. A confirmation message appears. Click **Yes** to remove the source association data or **No** to abort the removal.
5. Repeat Steps 1 to 3 if you want to remove more source association data.

- Click **Close** to quit the dialog.

### Note about “Reset to Defaults”

You can click **Reset to Defaults** to save time configuring the source association data when the Paragon channel ports and the router’s source ports are associated with each other based on the same port numbers. The command has these characteristics:

- All existing source association data is cleared and replaced by new data.
- All channel ports will be associated with source ports based on identical port numbers. That is, channel port 1 is associated with source port 1, channel port 2 with source port 2, channel port 3 with source port 3, and so on.
- The number of associated ports is determined according to the number of channel ports.
- Port type is set to audio by default.

## Configure User Stations

User ports on a Paragon switch connect to user stations, and destination ports (output connectors) on a NV5128 router connect to audio/video input devices. To determine which audio/video input devices should receive the audio/video signals transmitted by the router, you must associate user ports with destination ports. Usually your association settings should be able to direct the audio/video signals to the audio/video input devices located near a user station. A user port can be associated with a maximum of 8 destination ports, and each destination port can be associated with one user port only.

### Adding Destination Association Data

- Choose **Router > Configure User Stations**. The **Configure User Stations** dialog appears.

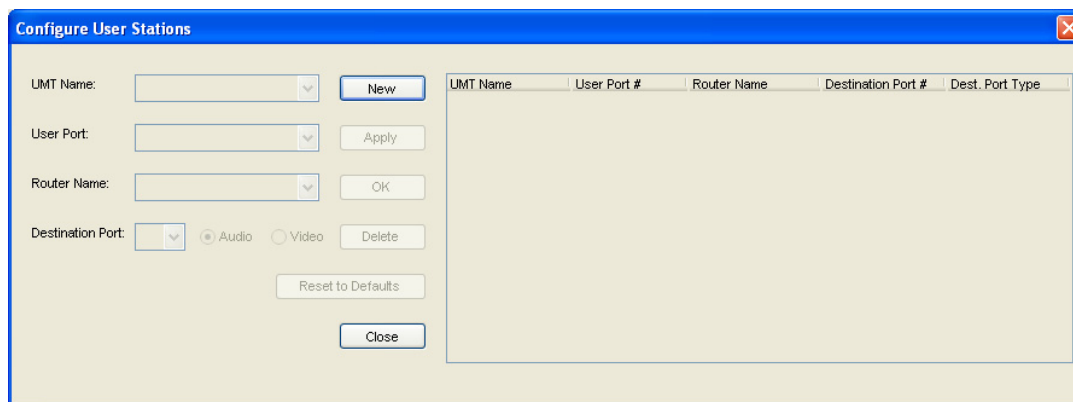


Figure 32 Configure User Stations Dialog

- Click **New** to start adding destination association data.
- Click the **UMT Name** drop-down arrow and select the Paragon Base Unit to which the Paragon Manager is connecting.
- Click the **User Port** drop-down arrow, and select the user port on the Paragon switch that you want to associate with the router’s destination port(s).
- Click the **Router Name** drop-down arrow and select the NV5128 router whose destination ports you want to associate. The router must be the same one that you selected in the **Configure Servers** dialog.
- This step varies depending on your physical hardware configuration:
  - To associate all ports based on identical port numbers:**
    - Click **Reset to Defaults**.

- b. A confirmation message appears. Click **Yes** to reset. Then each user port is associated with a destination port if they share the same port numbers. Note that port type of all destination association data is set to Audio by default.
  - **To associate the ports at a random sequence:**
    - a. Click the **Destination Port** drop-down arrow and select the destination port to associate with.
    - b. Click **Audio** if the selected destination port is an audio connector, or **Video** if it is a video connector. The default is **Audio**.
7. If you associate the ports at a random sequence in Step 6, do one of these:
  - Click **Apply** to save the changes and the new association data is displayed in the table to the right. Repeat Steps 1 to 7 if you want to add more destination association data.
  - Click **OK** to save the changes and quit the dialog.
  - Click **Close** to abort the changes and quit the dialog.

### Editing Destination Association Data

You can change existing destination association data when any setting is incorrect or if you have made changes to the physical hardware configuration. For example, you may have moved the audio/video input devices from one user station to another user station or reconnected them to a different NV5128 router.

1. Choose **Router > Configure User Stations**. The **Configure User Stations** dialog appears.
2. Click the row containing the destination association settings that you want to change in the table. The highlighted data's settings are all displayed in the fields to the left.

UMT Name	User Port #	Router Name	Destination Port #	Dest. Port Type
Paragon242	1	NV5128 Router	1	Audio-DVI
Paragon242	2	NV5128 Router	2	Audio-DVI

Figure 33 Destination Association Table

3. Change any field you want except for the **UMT Name** and **User Port** fields, or click **Reset to Defaults** to reset all destination association settings based on identical port numbers.
4. Do one of these:
  - Click **Apply** to save the changes, and then the changes are reflected in the table. Repeat Steps 1 to 3 if you want to edit more destination association settings.
  - Click **OK** to save the changes and quit the dialog.
  - Click **Close** to quit the dialog without saving the changes.

### Removing Destination Association Data

You can remove any invalid destination association settings from the table.

1. Choose **Router > Configure User Stations**. The **Configure User Stations** dialog appears.
2. Click the row containing the destination association settings that you want to remove from the table.
3. Click **Delete**.
4. A confirmation message appears. Click **Yes** to remove the destination association data or **No** to abort the removal.
5. Repeat Steps 1 to 3 if you want to remove more destination association data.
6. Click **Close** to quit the dialog.

### Note about “Reset to Defaults”

You can click **Reset to Defaults** to save time configuring the destination association data when the Paragon user ports and the router’s destination ports are associated with each other based on the same port numbers. The command has these characteristics:

- All existing destination association data is cleared and replaced by new data.
- All user ports will be associated with destination ports based on identical port numbers. That is, user port 1 is associated with destination port 1, user port 2 with destination port 2, user port 3 with destination port 3, and so on.
- The number of associated ports is determined according to the number of user ports.
- Port type is set to audio by default.

---

## Exporting Router Configuration

After creating or changing the router association data, involving source and destination associations, you should save the data by exporting it for future use, or all association settings or changes you made will be lost when you exit from Paragon Manager or disconnect the Paragon system.

1. Choose **Router > Export Router Configuration**. The Select destination path dialog appears.
2. Ensure the file type shows XML Files.
3. Navigate to appropriate location, specify the filename and click **Save**. It is recommended to name the file based on the Paragon switch’s name for easy identification of the file when importing the data in the future.

---

*Note: All characters that are present in the **File name** field are regarded as the filename so you should remove unnecessary characters, including the extension, from this field when necessary.*

---

---

## Importing Router Configuration

Paragon Manager does *not* automatically import any previously-saved router association data so you must either create the router association data from the scratch or import existing router association data. This section explains how to import existing data.

1. Choose **Router > Import Router Configuration**. The **Select File to Import** dialog appears.
2. A confirmation message appears. Click **Yes** to import the selected data or **No** to cancel.
3. Ensure the file type selects XML Files.
4. Navigate to where the router association data *specific to* the Paragon switch is stored, select the appropriate file and click **Open**.

---

*Note: The router association data is Paragon switch-specific. If you import any router association data that is not for the connected Paragon switch, an error message appears, indicating that the UMT ID is different.*

---

---

## Checking Audio/Video Routing Results

Paragon Manager has a log panel at the bottom to display Paragon Manager activity. When Paragon Manager makes the router route audio/video signals based on the association data, the log panel records the activity and outcome.

There are two types of routing records as explained in the table.

<b>Type 1</b>	<p><b>NVISION 192.168.84.222 Connection Error.</b></p> <p>This message indicates that Paragon Manager fails to connect to the NV5128 router with the IP address 192.168.84.222. Check the router network settings and cabling when the connection error occurs.</p>
<b>Type 2</b>	<p>User Port 2 : 192.168.84.207 Connection of Source Port 6 to Destination Port 127. Success  User Port 2 : 192.168.84.207 Connection of Source Port 3 to Destination Port 25. Success  User Port 2 : 192.168.84.192 Connection of Source Port 1 to Destination Port 122. Destination Lock</p> <p>These messages indicate that Paragon Manager successfully connects to the NV5128 router with the IP address 192.168.84.207 and the other router with the IP address 192.168.84.192, and whether the routing for each audio/video source is successfully carried out.</p> <p>The information from left to right includes:</p> <ul style="list-style-type: none"> <li>• User port number, indicating the user station you are operating</li> <li>• Router's IP address</li> <li>• Source and destination port numbers, indicating the routing path</li> <li>• Routing result (success, destination lock, and so on)</li> </ul>

## Saving the Paragon Switch's Database

You can save the database of the connected Paragon switch, including system settings and channel configuration, as an XML-formatted file for your own backup or review purpose.

1. Choose **Help > Save XML Configuration**. The *Select destination path* dialog appears.
2. Navigate to the location where you want to save the file and specify the file name.
3. Click **Save**.

## Updating Firmware

In Paragon Manager, you can activate the firmware update utility—*Paragon Update*, in order to update your Paragon switch or even the user station's firmware version. To update the firmware, first download the latest firmware file from Raritan's website.

### To locate the firmware file:

1. Use your browser to visit the **Firmware and Documentation** section (<http://www.raritan.com/support/firmware-and-documentation/>).
2. Scroll down the page and click **Paragon II** to open a list of support documents and files.
3. Click the latest version to locate the latest firmware file for your device.

After downloading the file, unzip it, and then do the following:

---

Important: If the device you are going to upgrade is a Paragon switch, it is strongly recommended to back up the user profile prior to the upgrade. Otherwise, you may need to reconfigure specific user data, such as user passwords, after the upgrade.

---

### To update the firmware file:

1. Choose **Setup > Firmware Update**.
2. The **Confirm Disconnect** message box appears. Click **Yes** to disconnect the existing connection session.



3. The *Paragon Update* dialog appears.

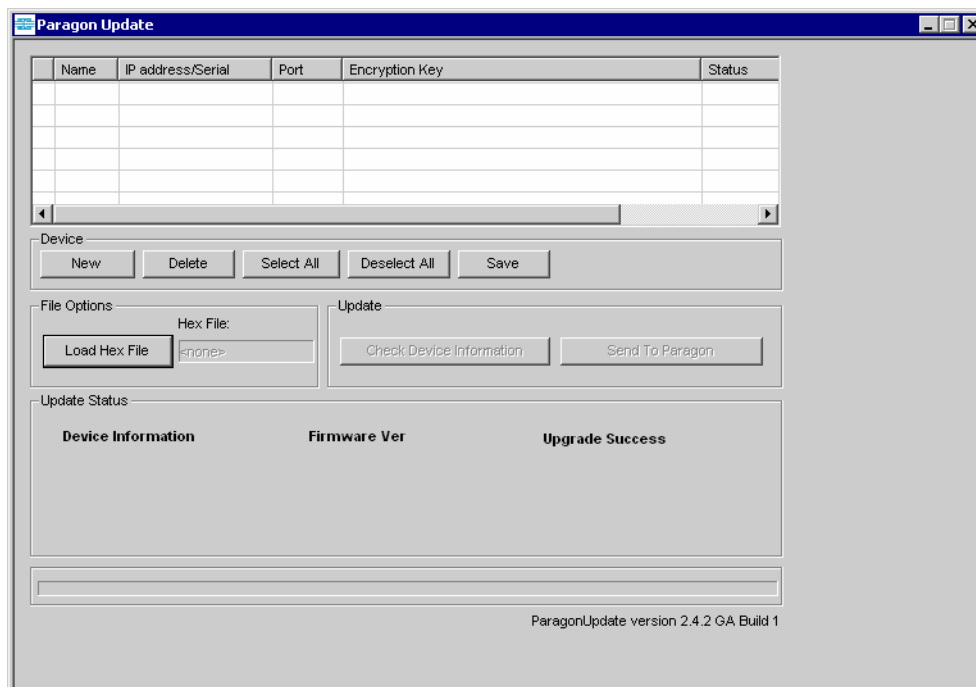


Figure 34 Paragon Update Dialog

4. If the device(s) intended to upgrade are listed in the dialog, go to Step 5. If not, click **New** to add the device(s) and click each field to enter or select the appropriate data, which is explained below:

Depending on the manner in which the computer running Paragon Manager is connect to the desired devices, you may update the firmware through the network or the RS-232 connection. For example, updating a Paragon I switch requires the RS-232 connection, and updating a Paragon II switch requires the network connection.

FIELD	DATA TO ENTER OR CHOOSE
Name	Type the name of the desired KVM switch or user station.
IP Address/Serial	<ul style="list-style-type: none"> <li>• Network connection: Type the IP address of the Paragon switch.</li> <li>• RS-232 connection: Choose &lt;Default Serial&gt; from the drop-down list.</li> </ul>
Port	<ul style="list-style-type: none"> <li>• Network connection: Type the number of the appropriate network port. This setting must be the same as the port setting on the OSUI of the Paragon switch. The factory default port is 3000.</li> <li>• RS-232 connection: Type the number of the serial port (COM port) that is connected to the desired KVM switch or user station.</li> </ul>
Encryption Key	<ul style="list-style-type: none"> <li>• Network connection: If you have assigned encryption keys for the Paragon switch in the OSUI's network setting, you must type the same encryption keys here. Otherwise, both of the connection and firmware upgrade will fail. If there are no encryption keys, choose &lt;Default No Encryption&gt;.</li> <li>• RS-232 connection: Always choose &lt;Default No Encryption&gt;.</li> </ul>

Click **Save** to store the current list of devices so next time when you execute the Paragon Update utility, the same list appears and saves your time re-entering the same information.

**Note:** The devices checked (✓) on the list must all belong to the same type. For example, either all of them are Paragon switches or all are user stations.

5. Select the checkboxes of the devices whose firmware you want to upgrade. OR click **Select All** to check all checkboxes.

	Name	IP address/Serial	Port	Encryption Key	Status
<input checked="" type="checkbox"/>	Paragon832	192.168.101.254	3000	<Default No Encryption>	
<input checked="" type="checkbox"/>	Paragon1664	<Default Serial>	2	<Default No Encryption>	
<input checked="" type="checkbox"/>	Paragon832-B	192.168.123.253	3000	01-02-03-04-05-06-07-08-09-10-11-12-13-14-15-16	

Figure 35 Paragon Update – Check All

6. Click **Load Hex File**. The *Open* dialog appears.
7. Navigate to where the desired firmware file (\*.hex) is located, select it and click **Open**.
8. **(Optional)** Click **Check Device Information** and then **Yes** to verify whether the firmware version is designed for the Paragon model you are going to upgrade. The *Paragon Device and File Version Information* window appears; click **OK** to exit. If the firmware file is suitable for updating your device, you will be returned to *Paragon Update* dialog. Otherwise, a warning message is displayed.

Paragon Device and File Version Information

Hex File Information

Device Type:	H/W Ver	F/W Ver
UMTH/MII	0A, 0B	3E5
UMTS	0A, 0B	3E5

Device Information

Device Type:	H/W Ver	F/W Ver	Version OK?	Upgrade ?
UMTH/MII	0B	3E5	<input checked="" type="checkbox"/>	<input checked="" type="checkbox"/>
<Unknown>	<Unknown>	<Unknown>	<input type="checkbox"/>	<input type="checkbox"/>
<Unknown>	<Unknown>	<Unknown>	<input type="checkbox"/>	<input type="checkbox"/>
<Unknown>	<Unknown>	<Unknown>	<input type="checkbox"/>	<input type="checkbox"/>

Special Information

Auxiliary Version Value:

OK

Figure 36 Paragon Device and File Version Information Window

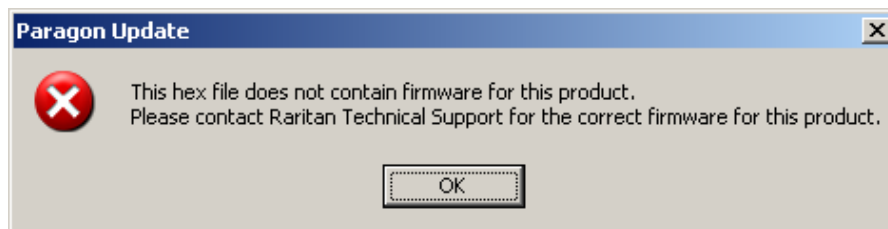


Figure 37 Wrong Firmware Warning Message

9. Click **Send To Paragon** to perform the upgrade. A progress indicator is displayed on the bottom of the dialog to indicate the upgrade status. This may last for several minutes depending on your network speed.

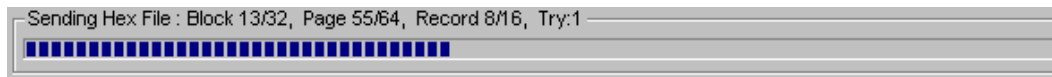


Figure 38 Paragon Update Progress Bar

Paragon Update utility will update the selected devices one by one, but if one device encounters problems during updating, the utility will prompt you with a message, and you must click **OK** to let the utility continue to update the next devices.

When the device is updated successfully, the “Device Update Successful” message box appears. Click **OK** to close the message.

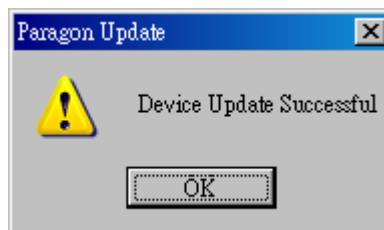


Figure 39 Paragon Update Successful Message

## Reorganizing the Update List

You can remove unnecessary Paragon switches or user stations from the list in the *Paragon Update* dialog.

1. Select the checkboxes of those Paragon switches or user stations that you want to remove.
2. Click **Delete**.
3. Click **Save** to save the changes.

## Disconnection

Do this if you want to disconnect the existing connection session without closing Paragon Manager.

1. Choose **Session > Disconnect**. Or click the **Disconnect** shortcut button on the toolbar.



Figure 40 Session Menu - Disconnect

2. Click **Yes** when a message asks you to confirm the disconnection.

## Closing Paragon Manager

Choose **Session > Exit** to close Paragon Manager. The existing connection session is also disconnected at the same time.

## Synchronizing Database

Paragon Manager is able to synchronize its database with the connected Paragon switch all the time after establishing the connection. Therefore, usually you don't need to issue the "Synchronize Database" command manually. However, if the Paragon switch is disconnected abnormally by accident, and the database is not synchronized after the connection is restored, you may have to execute "Synchronize Database" to have Paragon Manager download the latest database from the Paragon system. The command can be executed either by choosing **Setup > Synchronize Database** or clicking the **Synchronize Database** icon on the toolbar.

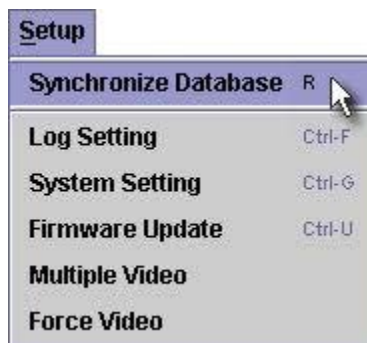


Figure 41 Setup Menu – Synchronize Database

## Paragon Manager Help

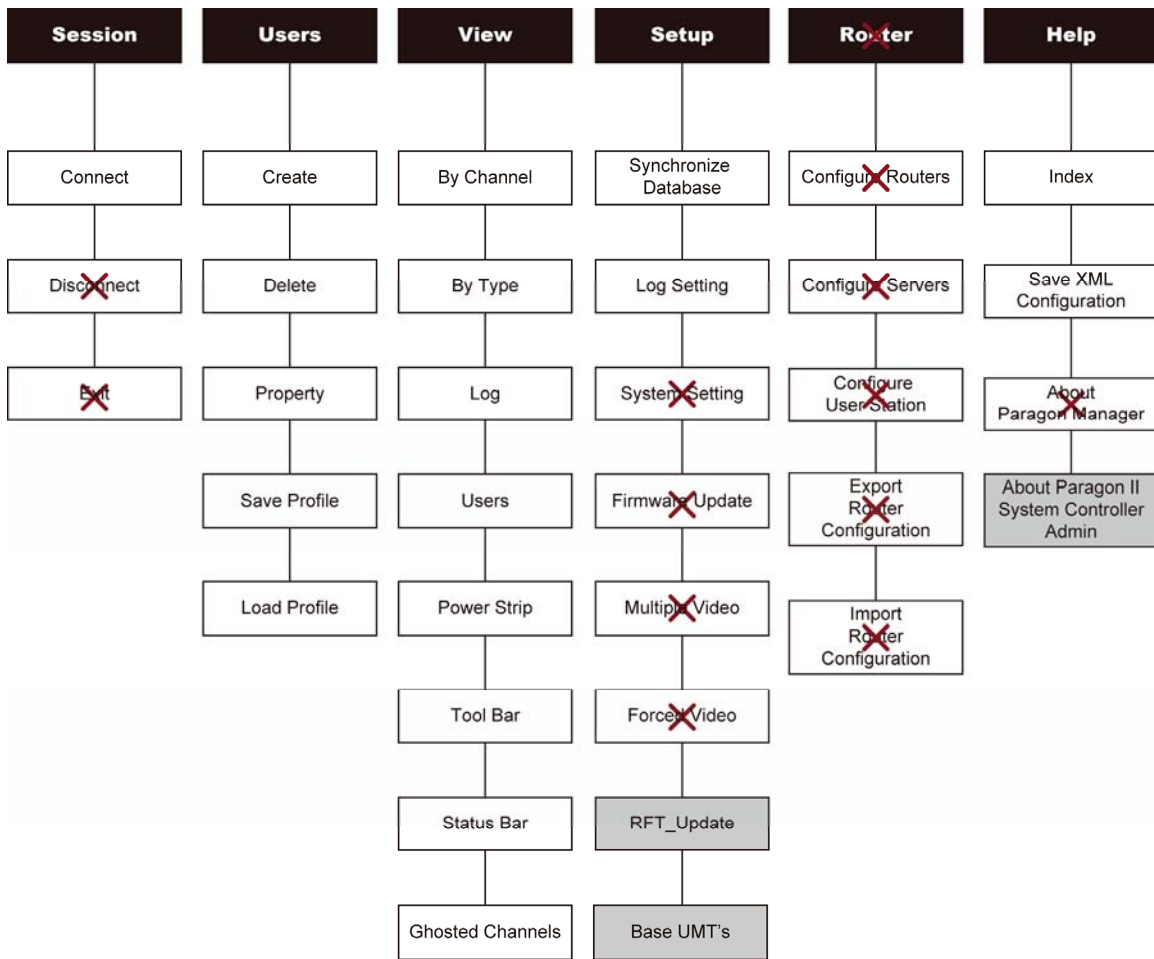
- Choose **Help > Index** to view this user manual online.
- Choose **Help > About Paragon Manager** to view product name and version information. This will assist you in the event you must call Raritan Technical Support for assistance.

# Appendix A: Client Software for Paragon II System Controller

**This appendix is only for Administrators who use Paragon II System Controller (P2SC).**

The client software for Paragon II System Controller (P2SC), which is called **Paragon II System Controller Admin (P2SC Admin)**, looks similar to Paragon Manager. Both software utilities share basic features and similar user interface. In this section, we will point out the common commands and differences. For other configuration information about Paragon II System Controller, see **Paragon II System Controller (P2SC) User Guide**, which can be downloaded from Raritan’s website (<http://www.raritan.com>).

## Comparison of Menu Commands between Paragon Manager and P2SC Admin



**Legend**

xxxx	Shared commands
<del>xxx</del>	Commands available in Paragon Manager only
xxxx	Commands available in P2SC Admin only

For most of the shared commands, the operation and functions are the same as those in Paragon Manager and you can refer to previous chapters for these functions.

As for the commands specific to P2SC Admin, they described in the following sections. For more information, see **Paragon II System Controller (P2SC) User Guide**.

## Some Differences in the Shared Commands

Although most of the shared commands provide the same features and options as those in Paragon Manager, still a few differences exist in several shared commands.

### Connect (Session Menu)

---

In P2SC, this command is for logging in to a Paragon II System Controller (P2SC). Simply type the Administrator's user name (default: **Admin**) and password (default: **raritan**), and then click **Login**. Note the password is case-sensitive.

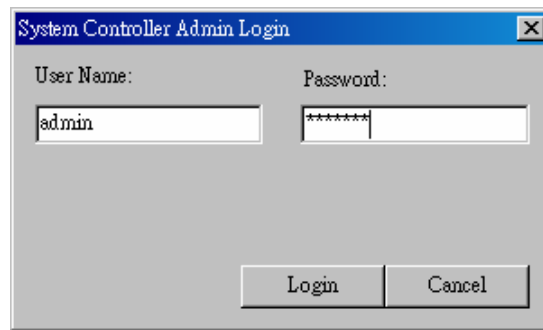


Figure 42 P2SC - System Controller Admin Login Dialog

## Create and Property (Users Menu)

The functions of the “Create” and “Property” commands are similar to those of Paragon Manager. Only two points are different:

- P2SC does not support the Forced Video function so the configuration of “Allow Forced Video Privileges” is not available.
- “Green Mode” performs power-saving function as the “Sleep Mode” in Paragon Manager, but in P2SC it offers only two options: ON and OFF, instead of three options as Paragon Manager.
  - ON will activate the power-saving mode when the mouse/keyboard activity is idle for the time (minutes) specified under “Green Mode.”
  - Choosing OFF will never activate the power-saving mode.

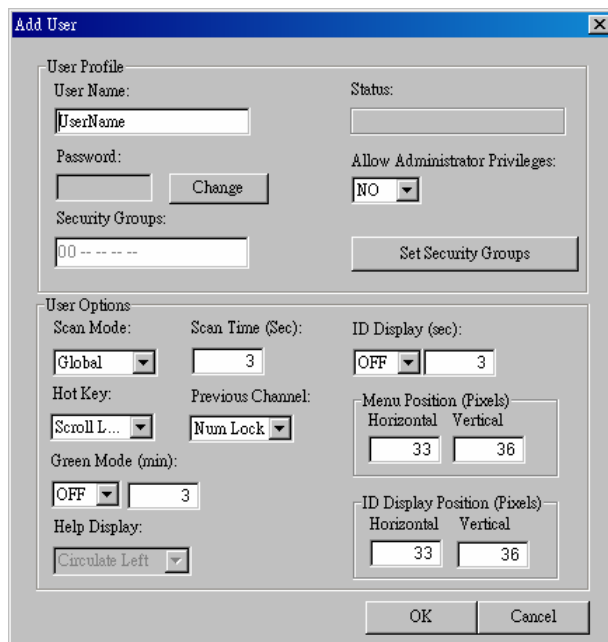


Figure 43 P2SC – Add User Dialog

## Exclusive Features in P2SC

Those features specific to P2SC Admin are described below.

### RFT\_Update (Setup Menu)

The “RFT\_Update” command updates the P2SC firmware. Before updating the firmware, you must download the latest P2SC firmware from the **Firmware and Documentation** webpage on Raritan’s website at: <http://www.raritan.com/support/firmware-and-documentation/>. Then do the following:

1. Choose **RFT\_Update** from the **Setup** drop-down menu.
2. A message box appears, asking you to confirm the RFT update action. Click **Yes**.
3. The *Select RFP File* dialog appears. Choose the appropriate file and click **Open**.

### Base UMT’s (Setup Menu)

This command is to determine which and how many Paragon switches are managed by P2SC. A P2SC can control up to 8 Paragon II Base Units.

## Adding Paragon Switches in P2SC

1. Select **Base UMT's** from the **Setup** drop-down menu. The *Paragon System Configuration* dialog appears.

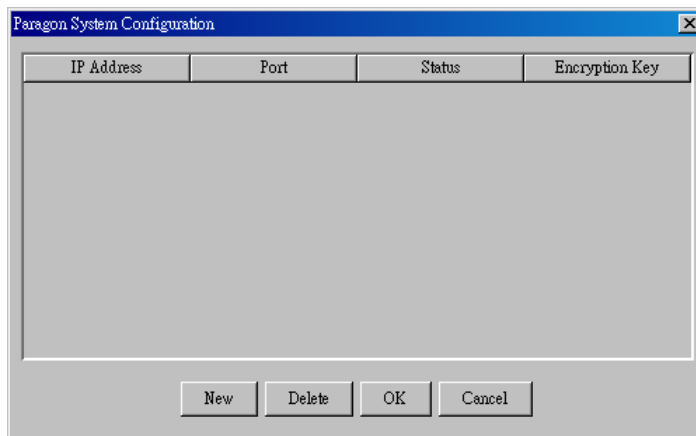


Figure 44 P2SC – Paragon System Configuration Dialog (No Data)

2. Click **New** to add new Paragon switches' data.
3. Click each field and type the appropriate data for Paragon switch intended to connect. Make sure the IP address and Port number for each Paragon switch are entered, and their data is the same as each Paragon switch's network setting on the OSUI.

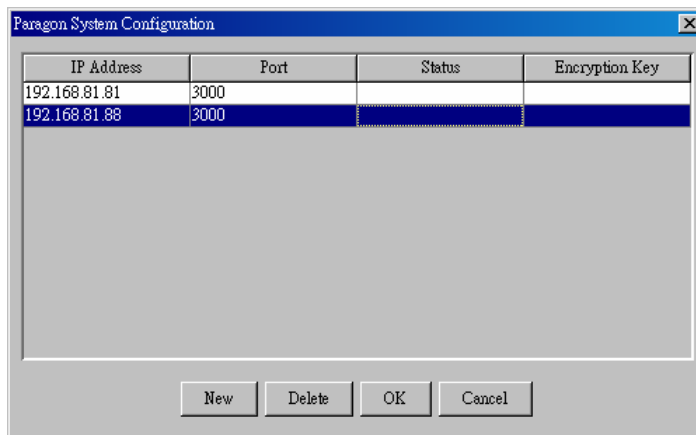


Figure 45 P2SC – Paragon System Configuration Dialog (with Data)

4. Click **OK** to put the Paragon switches under the control of P2SC, or **Cancel** to abort it.

## Removing Paragon Switches from P2SC

1. Select **Base UMT's** from the **Setup** drop-down menu. The *Paragon System Configuration* dialog appears.
2. Click the Paragon switch which you want to remove and click **Delete**.

## About Paragon II System Controller Admin

This command simply displays the current versions of the P2SC device and P2SC Admin software.







### ▶ U.S./Canada/Latin America

Monday - Friday  
8 a.m. - 8 p.m. ET  
Phone: 800-724-8090 or 732-764-8886  
For CommandCenter NOC: Press 6, then Press 1  
For CommandCenter Secure Gateway: Press 6, then Press 2  
Fax: 732-764-8887  
Email for CommandCenter NOC: [tech-ccnoc@raritan.com](mailto:tech-ccnoc@raritan.com)  
Email for all other products: [tech@raritan.com](mailto:tech@raritan.com)

### ▶ China

#### Beijing

Monday - Friday  
9 a.m. - 6 p.m. local time  
Phone: +86-10-88091890

#### Shanghai

Monday - Friday  
9 a.m. - 6 p.m. local time  
Phone: +86-21-5425-2499

#### GuangZhou

Monday - Friday  
9 a.m. - 6 p.m. local time  
Phone: +86-20-8755-5561

### ▶ India

Monday - Friday  
9 a.m. - 6 p.m. local time  
Phone: +91-124-410-7881

### ▶ Japan

Monday - Friday  
9:30 a.m. - 5:30 p.m. local time  
Phone: +81-3-3523-5994  
Email: [support.japan@raritan.com](mailto:support.japan@raritan.com)

### ▶ Europe

#### Europe

Monday - Friday  
8:30 a.m. - 5 p.m. GMT+1 CET  
Phone: +31-10-2844040  
Email: [tech.europe@raritan.com](mailto:tech.europe@raritan.com)

#### United Kingdom

Monday - Friday  
8:30 a.m. to 5 p.m. GMT  
Phone +44(0)20-7090-1390

#### France

Monday - Friday  
8:30 a.m. - 5 p.m. GMT+1 CET  
Phone: +33-1-47-56-20-39

#### Germany

Monday - Friday  
8:30 a.m. - 5 p.m. GMT+1 CET  
Phone: +49-20-17-47-98-0

### ▶ Korea

Monday - Friday  
9 a.m. - 6 p.m. local time  
Phone: +82-2-5578730

### ▶ Melbourne, Australia

Monday - Friday  
9:00 a.m. - 6 p.m. local time  
Phone: +61-3-9866-6887

### ▶ Taiwan

Monday - Friday  
9 a.m. - 6 p.m. GMT -5 Standard -4 Daylight  
Phone: +886-2-8919-1333  
Email: [support.apac@raritan.com](mailto:support.apac@raritan.com)